

BROMLEY & SHEPPARDS COLLEGES



Herald

October 2023



Welcome

Dear Collegians and Friends,
Now we have passed the Autumn Equinox, we can say - in the words of the old joke - winter draws on. However, there is a lot of autumn to go, and September has been an eventful month here in the Colleges. So much so, that I apologise if I have left anything out!



Much of this has been recorded in photographs, many by Paul Allton, so this will be a picture filled edition. Concerts have been held, a tree felled (one of the Before pictures is here), and money raised for various good causes. Our cover picture is of Alnmouth Bay, taken by Clare Preston.

The deadline for the next Herald will be Saturday 28thth October. Please send contributions to me, preferably by email to: therevvedbee@hotmail.co.uk

As ever, thanks to Jo, for printing and delivering the Herald each month.

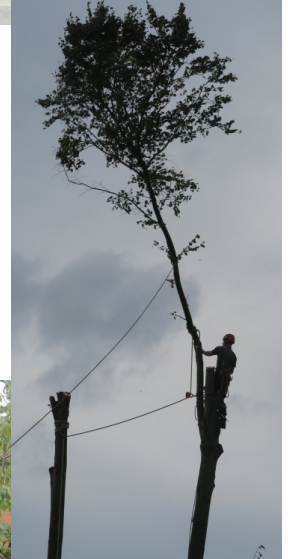
Brandy Pearson



Goodbye to the Sycamore Tree

I was saddened to hear that one of our tall sycamore trees had to be felled because it threatened the wall, the pavement and the road. (Personally I would probably have moved the main road, but that was not going to happen!) It was fascinating to watch the expert tree surgeons do their quite dangerous work. Paul Allton chronicled the work, with pictures before, during and after, along with some of the audience!







"Trees are poems that
the earth writes upon
the sky."

— Khalil Gibran,



Remembering Pam Dawson

I want to thank Tina
and Paulos for making
it possible for so many
of us to see Pam
Dawson's funeral.



Pam was a much loved and respected Collegian and lived here for many years.

I enjoyed her tales of being evacuated during the war, twice, to Kent and then to Cornwall.

It was during this time that a great sadness happened. Her Flight Sergeant brother was killed on active service and her sister died from illness. Pam also had a twin brother.

Pam married in 1952 and had five children and I can confirm that she was very proud of them and of all grandchildren.

We shared an interest in Play groups although Pam had trained as a teacher by going to night school to get "O" and "A" levels to gain the required qualifications.

Following the breakdown of her marriage in 1980 Pam was supported by many friends and the Broken Rites Organisation.

Art was something Pam enjoyed and was very good at.



She is still mentioned at our group here.

Pam was part of my fundraising "A" team and over the years helped to raise thousands of pounds for The Friends organisation.

Her faith was deeply important and Pam is remembered by many at the Parish Church with much affection. For me the most moving thing Pam did was to visit her ex husband when he was dying. I will miss her.

Janet Heatley

Dulwich Picture Gallery

Yvonne and I were pleased to take several Collegians to this Gallery to see the exhibition of Berthe Morisot, and, of course, the regular collection of outstanding Old Masters - the Gallery predates the National



Gallery. The new exhibition, 27th September to 28th January, is RUBENS AND WOMEN, with over 40 works on display, many not seen in Britain before. If you think Rubens painted only voluptuous women with extravagantly displayed flesh-this will be different! We are Friends of the Gallery so admission is free for collegians as our guests. We can also drive you there.

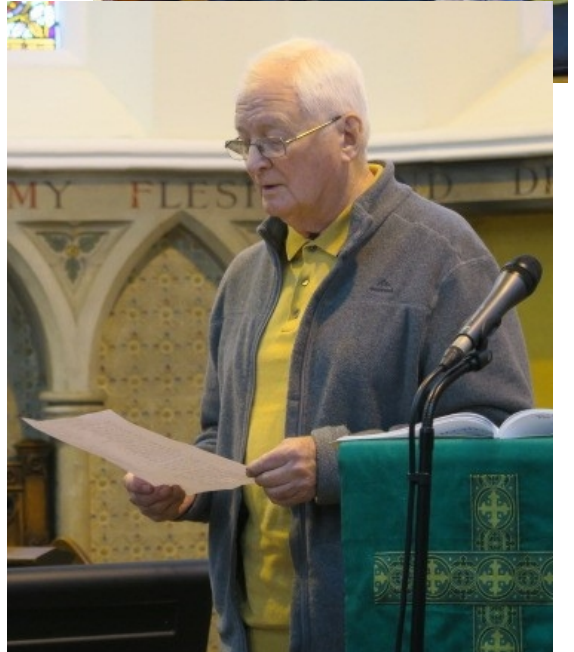
Neil Fairlamb

The Dorothy McDougall Memorial Concerts

Collegians and friends got together on Saturday September 23rd for a Concert in memory of Dorothy McDougall, raising money for her favourite charity, Friends of the Earth.

Paul Allton took many photos of the special occasion.

Maybe you recognise these people!









To all concerned in Yesterday's concert,
Ann Garrett of Bromley Friends of the Earth has asked me to convey her thanks to you all for such an enjoyable concert and for raising funds in aid of Friends of the Earth and in memory of Dorothy, who would have been very proud of you. I have told her that we took **£404**, with a bit to come from gift aid. She will write a report of the concert for the Bromley FofE November newsletter and reproduce the picture of Dorothy in costume from the front of the programme. I shall send her a good copy of the original.

It was a great success after so much hard work.

Congratulations and best wishes,

Kathleen Craig

Bun of the Month- Barmbrack Buns.

A sweet tea bread associated with Hallowe'en in Ireland where various objects are baked into it for fortune-telling, with the fate of the finder suggested by the object. A dried pea means you will not marry this year, a matchstick means you will have a year of disputes, a cloth means you will be poor, a ring and you will marry within a year. Barm comes from the froth of fermented ale, once used as yeast for bread dough. You need for 12 buns: 1 cup of strong black tea, 100g currants, 140g sultanas, 80g mixed peel, 230ml milk, 80g butter, 50g dark brown sugar, 300g spelt flour, 100g strong white bread flour plus extra for dusting, 1 tsp salt, 1 sachet-7g-of instant yeast, 2 tsps ground nutmeg, ditto cinnamon, salted butter to serve.

Grease a muffin tin, and put the tea into a mixing bowl. Soak the weighed dried fruits in the tea for 20 mins. In a pan, gently heat the milk, butter and sugar until combined, then cool. Combine the flours, salt, yeast and spices in a large bowl. add cooled milk to form a dough. Drain soaked fruits, discarding the tea, and add to dough and knead to combine. Turn out onto a floured surface, and knead for 5-10 minutes. Pop dough back in bowl, cover and leave in a warm place for an hour or so. Preheat oven to 180c, and when dough has risen form 12 smooth little balls and put in the muffin tin. Bake for 15 minutes, then allow to cool. Serve with lashings of salty butter.

Neil Fairlamb

The Gardening Group

In the gardening group we sorely miss our much valued member, Ruth. Ruth was so knowledgeable about plants and gardening so that now we often have to resort to Google for help and advice!. All around the College grounds there are reminders of her work, countless foxgloves, hydrangeas grown from her



cuttings and so on. But one of her big achievements was the saving of the fatsia which was being attacked



by evil vine weevils. Ruth painstakingly removed all the nasty grubs and replanted it elsewhere where it now flourishes (see photo). Just one of her many success stories! The group has given priority recently to clearing the overgrown woodland walk along the south wall of overhanging branches

and debris so that it is open for collegians to walk along and not a battle to get through.

Here are two photos to demonstrate what the group has been doing recently.

Jill Baisley

Ruth Allton – A Thank you

My family and I wish to thank Collegians for their love, prayers and support in these weeks after Ruth's death. I am also most grateful to all who contributed donations in Ruth's memory to the Leprosy Mission, a cause which was very dear to Ruth particularly as her father worked for some years as a Deputation Secretary for the Mission. The total collection taken at the Service of Thanksgiving amounted to £520 (with some gift-aided) and to date the sum of £1012 has also been contributed by friends and family. It is a great comfort to know that this money will help the work Ruth so admired.

For myself I feel very strongly that Ruth was richly affirmed on August 31st and I am carried on through the days by the support of my family and friends and especially by the community here. Ruth and I spoke recently of how one of us would have to go first but both of us felt happy that the one remaining would be here in this lovely Christian place upheld by the prayers, presence and practical help of the friends amongst whom we are blessed to live. And so it is proving to be for me!

There are, of course, many gaps but I am in good spirits. I am establishing a routine as I return to some sort of normality and my faith assures me in the words of Julian of Norwich that "all shall be well".

Paul Allton

Creative Arts Group on Holiday

Living proof of the inspirational effects of our Art Group, here is Janet Heatley, painting the sea while on holiday in Broadstairs.

Why not come and join us? Ask Bruce Driver for details.



Alnmouth Friary

In August Michael Hewitt and I spent 4 nights at Alnmouth Friary. It is an Anglican Franciscan house set on



high ground with magnificent views overlooking the sea and surrounded by a beautiful garden. Alnmouth is a quiet place whose main attractions are the beach and the golf course but up till 19th century it was an



important port, which probably

accounts for the six pubs in the high street. The house was originally built for a shipping magnate, so I was told, and dates from the early 20th century. It is a large rambling place with long passages and three separate staircases! From the chapel you can look out beyond the



altar towards the sea. There is a smaller chapel with the blessed sacrament. It is very quiet and warm there and I found it an ideal place to pray.

What I really enjoyed was spending time in the library above the chapel where you can sit on a sofa in the bay window and gaze out at the view. Two pairs of binoculars

are provided to check on passing ships or activities on the beach. But it is not a place for chatting as there is a sign saying: Silence. Chatting is done in the sitting room where tea is provided in the afternoon or while waiting to go into the dining room for meals. However if you wish to be silent you can avoid that and take your food on a tray.

Another important attraction is the coastal path which runs right past the garden, or you can walk on the beach. There were five brothers in residence. You can join in the daily offices, or not, (morning prayer is at 7.30, too early for me!) and there is a Eucharist every day usually at noon.

On the middle day of our week we missed that and lunch in order to take the bus into Alnwick and visit the famous gardens designed by the present Duchess of Northumberland. They are best seen in June when the roses are at their peak but there are also fascinating water features.

After the gardens we visited Barter Books which is a huge second hand book shop housed in the old station. While browsing through books a model train weaves its way around the building on tracks above your head. It is easy to get to Alnmouth by train, three and a half hours from Kings Cross. You can walk from the station but I would suggest a taxi.

Clare Preston



Open House Day

Every year, Bromley and Sheppard's Colleges take part in the London Open House Festival. There are tours around the colleges, and it is

a good opportunity for Janet to have a stall. As well as tea towels, cards and lavender bags, there were interesting bric a brac, and Neil provided many jars of jams and chutneys.

A couple of collegians opened their own homes to the visitors, and Maily-Clare provided demonstrations of spinning outside Sheppard's College. There is a photo on the back page.

£200 pounds or so were raised for the Friends.

Brandy Pearson





**Bromley and Sheppard's Colleges
London Road,
Bromley
BR1 1PE**